

Co-funded by the
Erasmus+ Programme
of the European Union



**IND
IRE**

ISTITUTO
NAZIONALE
DOCUMENTAZIONE
INNOVAZIONE
RICERCA EDUCATIVA

this must
be the
PLACE

Decalogue of Inclusion

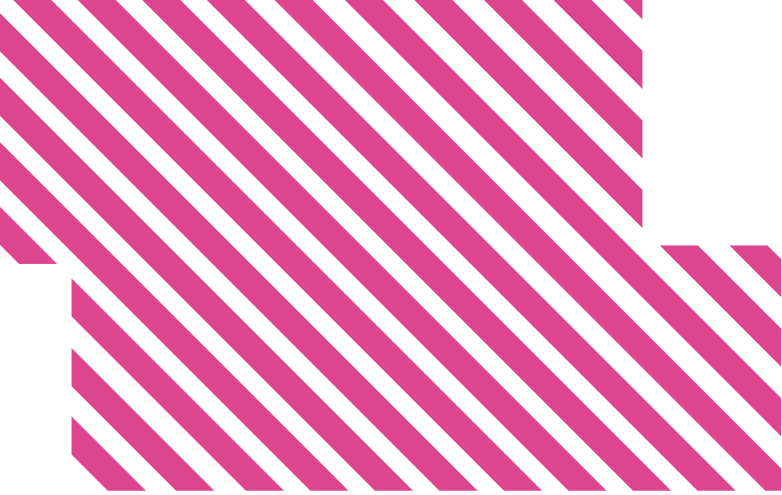
PROJECT IMPLEMENTATION AND COMMUNICATION

CINERGIES
TRANSMEDIA CO-OP



**L'ASSOCIACIÓ
DRETS SEXUALS
I REPRODUCTIUS**

MW
maghweb



These ten pro-inclusivity rules were developed collaboratively by members of **Maghweb**, **Associació dels drets sexuals i reproductius** and **Cinergies** in the framework of **This Must Be the Place**, a project financed by **INDIRE Erasmus+** that aims to strengthen the empowerment of women and members of the **LGBTQIA+** community in the public space.

Principle

MULTI-ACTOR COLLABORATIONS FOR SOCIAL AND POLITICAL TRANSFORMATION

Guideline

To guarantee social and political transformation with a project, collaborate in a multi-directional way with all the different members of a community (schools, families, young people, social educators, professionals, institutions).



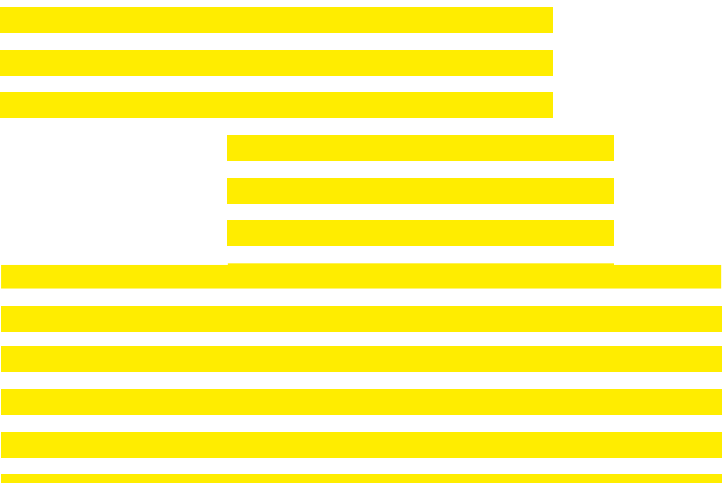
1.

Principle

NON-DISCRIMINATION

Guideline

Actively encourage the visibility and participation of people with different, intersecting identities.



2.

Principle

RIGHTS-BASED PERSPECTIVE

Guideline

Make sure your project provides clear, correct information so that people can take autonomous decisions to claim their rights.



3.

Principle

ACCESSIBILITY

Guideline

Ensure fully accessible activity spaces and communication content which uses comprehensive, gender-inclusive language that can be adapted to different formats and communication platform contexts (visual, audio, text).



4.

Principle

TARGET SENSITIVITY

Guideline

Get to know your target group through empathy guided work which puts everyone involved in the shoes of the other.



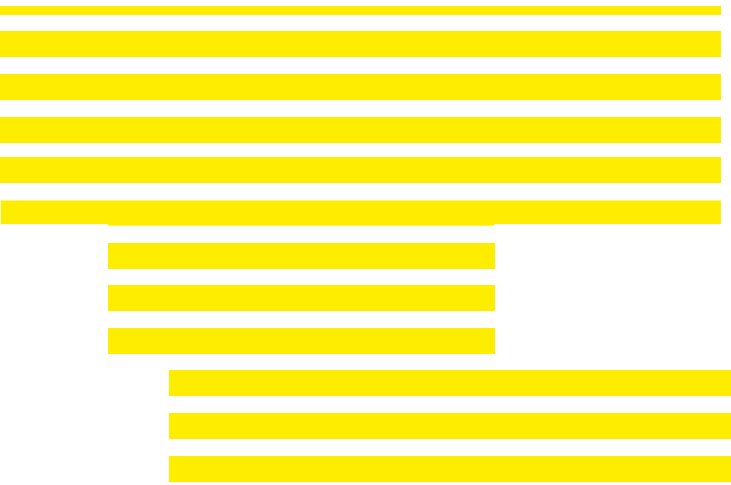
5.

Principle

CONSENT AND CARE

Guideline

Ensure that target groups are well-supported, are fully aware of the possible consequences of an action and understand and fully agree to participate.



6.

Principle

SELF DETERMINATION

Guideline

Enable target groups to be the protagonists of their own processes of transformation and consciousness in activities and allow people to tell their own stories in communication content.

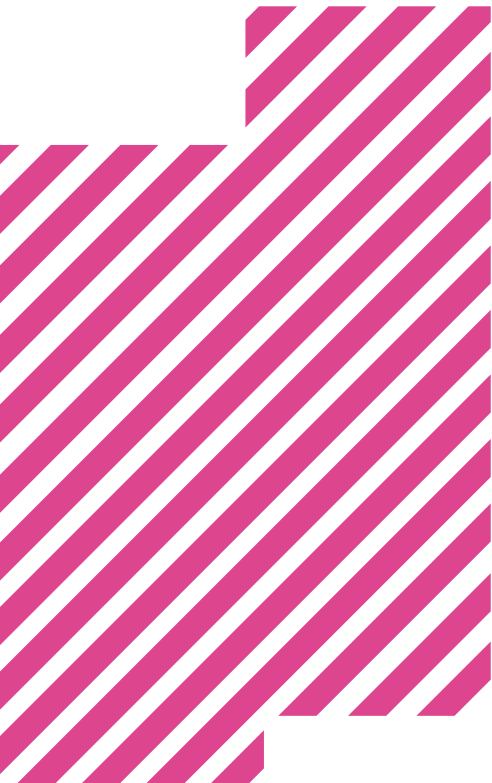


Principle

NO JUDGEMENT

Guideline

Build brave, safer spaces where participants are invited not to judge each other and listen and speak without expressing judgements.



8.

Principle

CHALLENGE STEREOTYPES

Guideline

Always ask yourself and the others what root the representation of an individual or group is coming from and ensure that this root is not the reproduction of a stereotype.



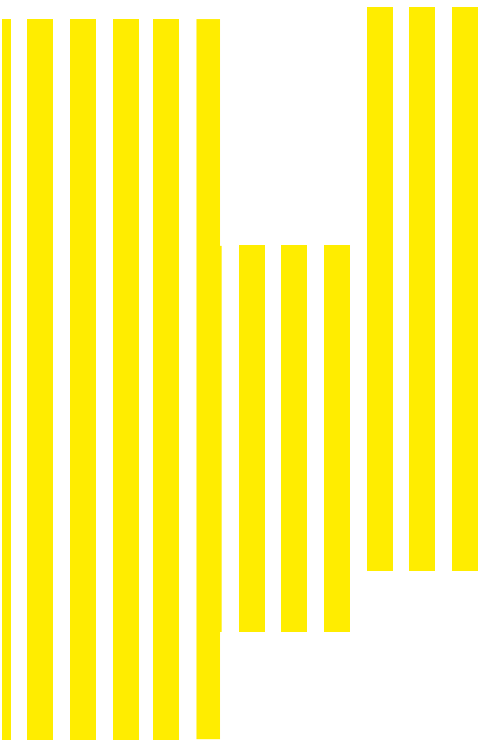
9.

Principle

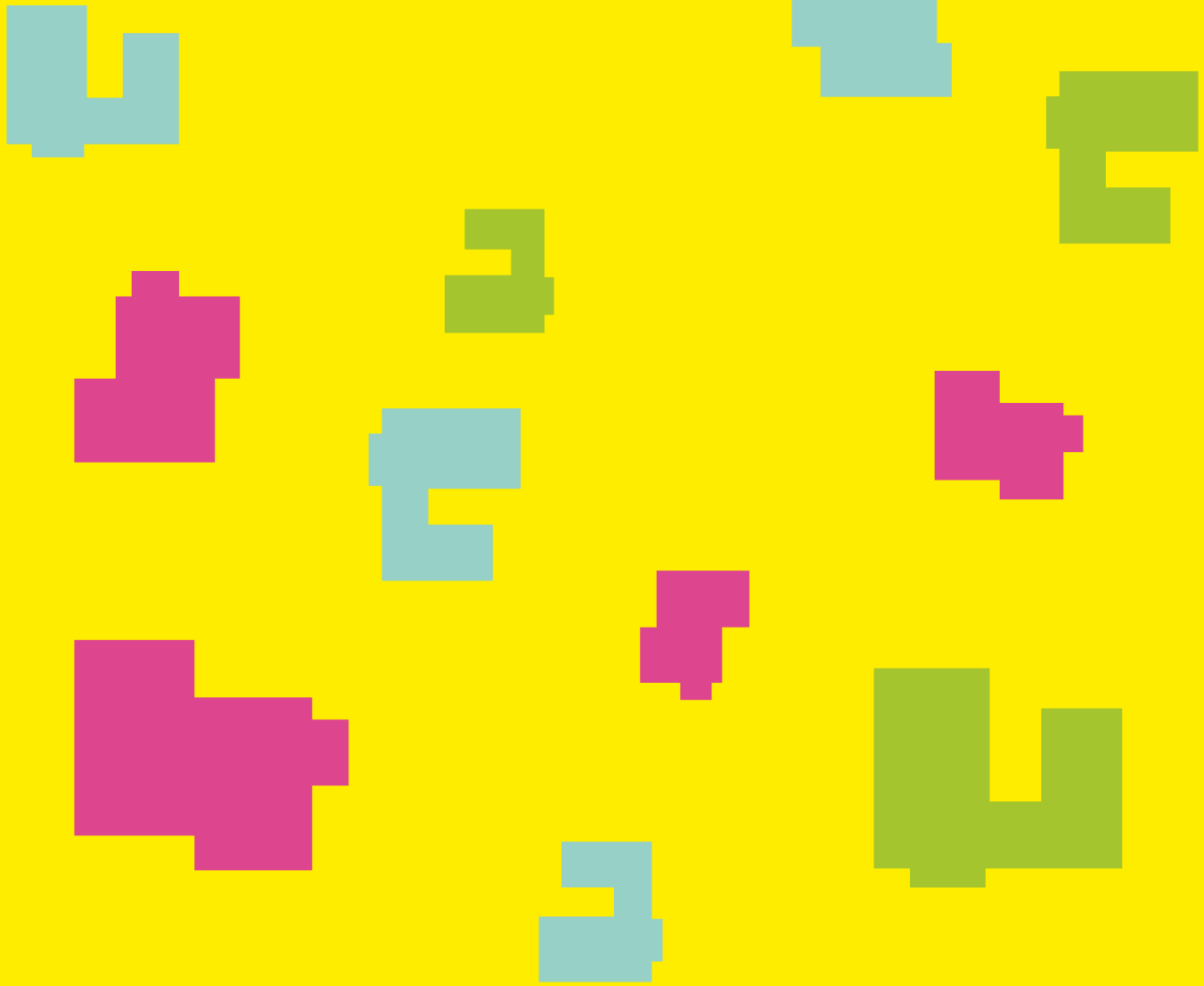
INTERSECTIONALITY

Guideline

Consider and account for all potential areas of discrimination and the ways they intersect in all actions and communication.



10.



Co-funded by the
Erasmus+ Programme
of the European Union



**IND
IRE**

ISTITUTO
NAZIONALE
DOCUMENTAZIONE
INNOVAZIONE
RICERCA EDUCATIVA

this must
be the
PLACE



**L'ASSOCIACIÓ
DRETS SEXUALS
I REPRODUCTIUS**

